



KUPPAM EAST TOURISM CIRCUIT

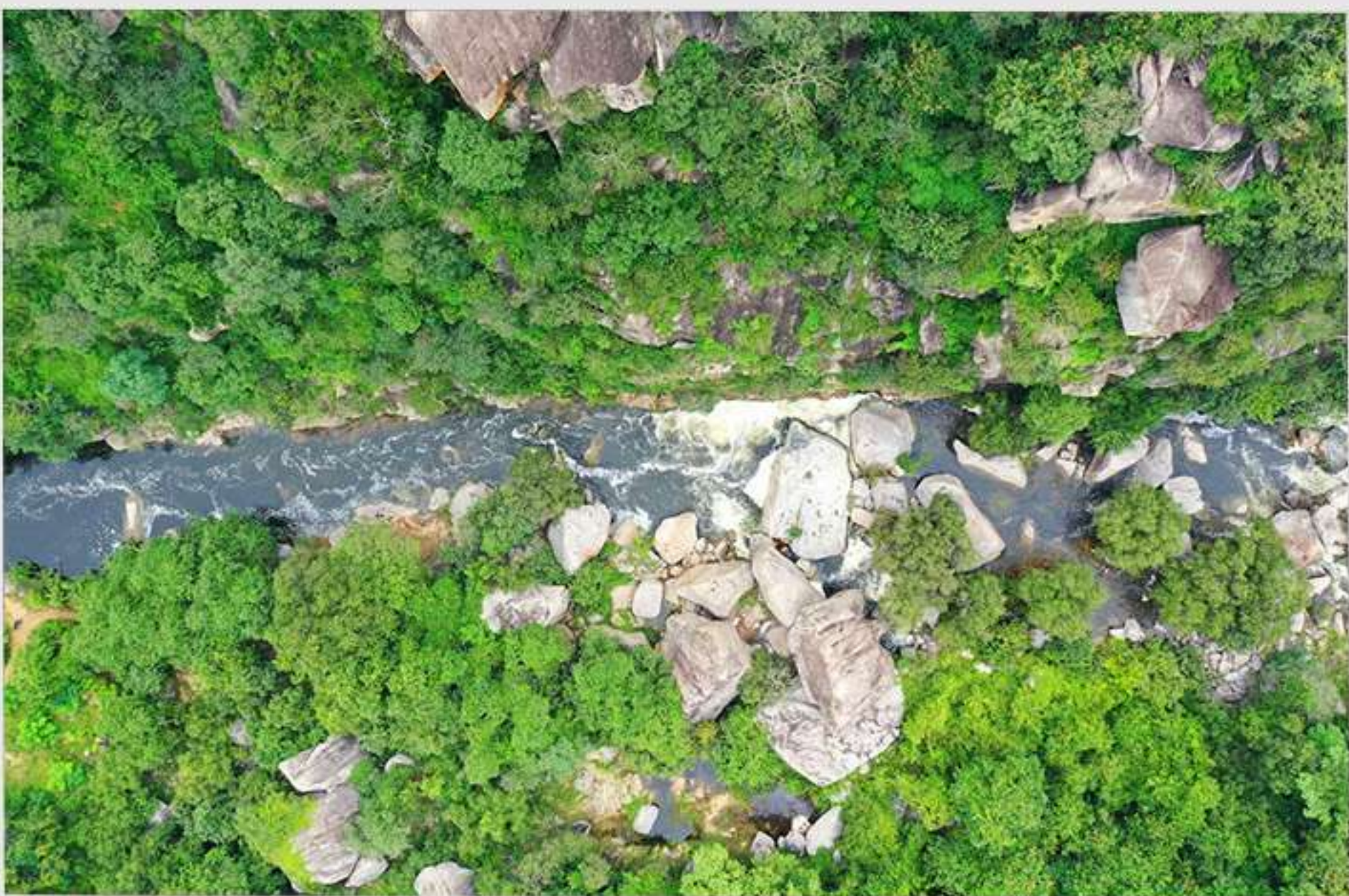


PUNNAMI

Punnami serves as the primary entry point to the Kuppam East Tourism Circuit. It functions as the starting location and accommodation hub, offering convenient access to surrounding attractions. The calm surroundings make it ideal for beginning and concluding the day's journey.

KANAKA NASHAMMA TEMPLE

Kanaka Nashamma Temple is a revered local shrine deeply rooted in regional faith and tradition. The temple is known for its peaceful atmosphere and traditional worship practices. It offers visitors a spiritually enriching start to the circuit and reflects the living religious culture of the region.



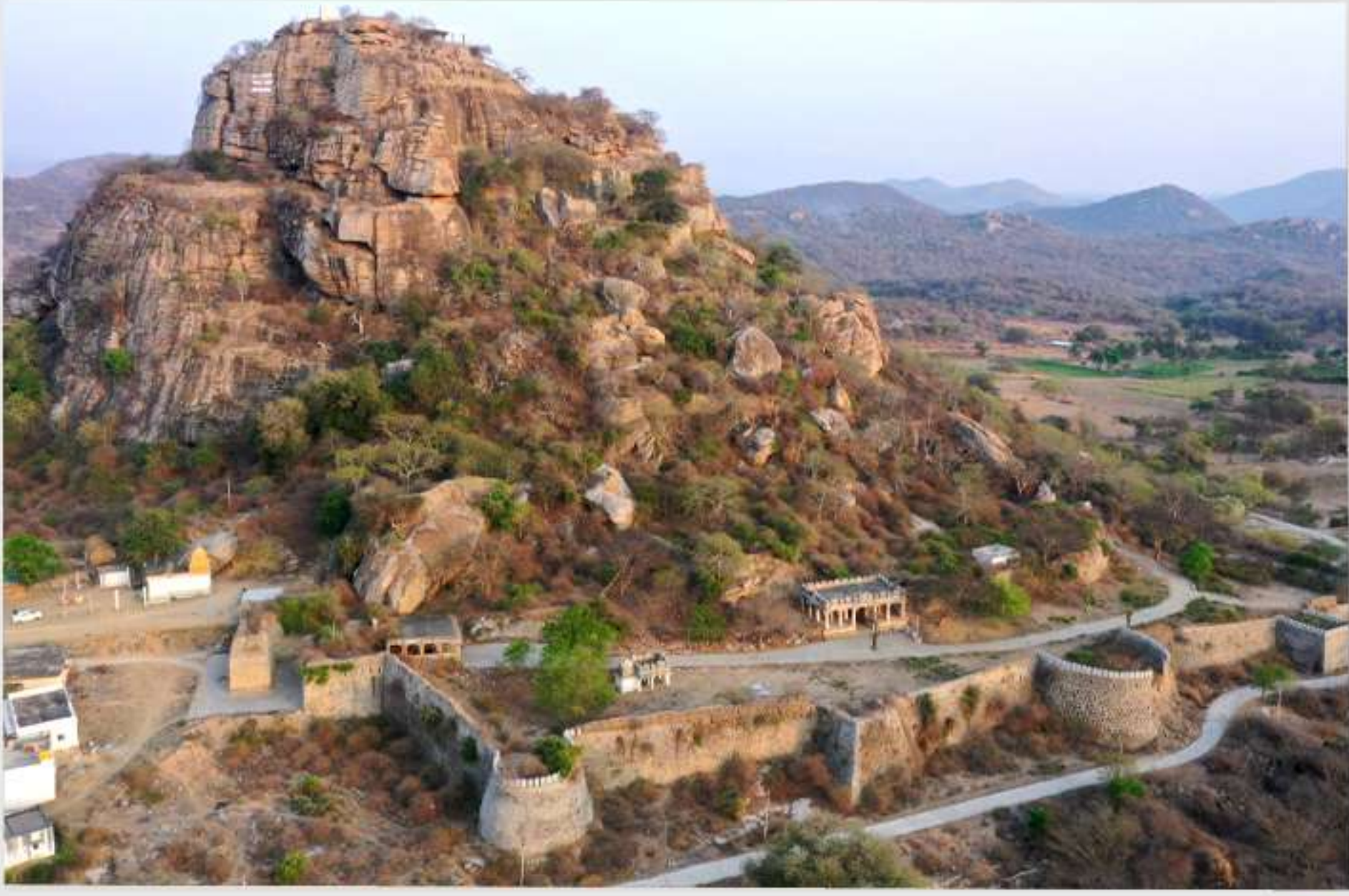
DIBBAREVULU

Dibbarevulu is a natural landmark known for its distinctive rock formations and open landscapes. The site provides a brief yet refreshing nature stop where visitors can appreciate the geological beauty and enjoy the surrounding scenery.

CHELIMICHENU WATERFALLS

Chelimichenu Waterfalls is one of the prominent natural attractions in the circuit. Surrounded by forest cover, the waterfalls offer a tranquil environment ideal for relaxation, nature walks, and photography. The site allows visitors to connect closely with nature and experience the region's ecological richness.





KANGUNDI FORT

Kangundi is a key tourism hub combining heritage, scenic views, and adventure experiences. The historic Kangundi Fort reflects the region's past and offers panoramic views of the surrounding hills. The area also features leisure and adventure activities such as rock café visits, bouldering, and fitness facilities, making it a vibrant stop for diverse traveller interests.

KANGUNDI ADVENTURE & CLIMBING

Kangundi is a hotspot for heritage and adventure. Explore the historic Kangundi Fort, enjoy hill climbing, bouldering, Rock Café, and fitness activities, and experience the excitement of the Bouldering Festival and Hill Climbing Cup Competition. A must-visit for history buffs and adventure lovers alike.



NANYALA ELEPHANT CAMP

Naniyala Elephant Camp provides an experiential wildlife tourism opportunity. Visitors gain insights into elephant care, forest ecosystems, and conservation practices. The camp promotes responsible tourism and offers a meaningful interaction with nature and wildlife.

RAMAKUPPAM TEMPLE GROUP

Ramakuppam is known for its cluster of ancient temples that represent the spiritual heritage and architectural traditions of the region. The temples offer a serene setting for worship and reflection while highlighting centuries-old cultural practices

- Sri Veerabhadra Swamy Temple
- Sri Anjaneya (Hanuman) Swamy Temple
- Sri Rama Temple
- Sri Shiva (Eshwara) Temple



KUPPAM WEST TOURISM CIRCUIT



KUPPAM

Kuppam serves as the central base for the western circuit. The town connects cultural, educational, and eco-tourism attractions and acts as a convenient starting and ending point for the day's journey.

NADUMURU NAGARAVANAM

Nadumuru Nagaravanam is an eco-tourism space developed amidst greenery. It provides a calm environment for visitors to relax and enjoy nature. The site is ideal for breakfast stops and offers an eco-friendly introduction to the circuit.



BETARAYASWAMY TEMPLE

Betarayaswamy Temple is an important spiritual landmark reflecting local religious beliefs and traditions. The temple attracts devotees and visitors seeking a peaceful spiritual experience rooted in regional culture.

MALLAPPAKONDA

Mallappakonda is a scenic hill destination offering expansive views and a tranquil atmosphere. The location is well suited for rest and reflection and is known for serving local cuisine, allowing visitors to experience the region's traditional flavours.





GUDIVANKA TEMPLE

Gudivanka Temple is a sacred site that adds spiritual depth to the western circuit. The temple is known for its calm surroundings and devotional significance, making it an important stop for pilgrims and cultural travellers.

AGASTYA INNOVATION HUB

Agastya Innovation Hub represents Kuppam's modern and progressive dimension. The centre showcases innovation, skill development, and community-driven initiatives. Visitors gain insight into educational and entrepreneurial efforts shaping the region's future



DRAVIDIAN UNIVERSITY

Dravidian University is a renowned academic institution that highlights Kuppam's role as a centre for learning and research. The campus offers a peaceful environment and a cultural atmosphere, making it a meaningful stop during the circuit

YAMAGANIPALLE MAHABHARATA TEMPLE

Yamaganipalle Mahabharata Temple offers a unique experiential tourism experience. Through live performances or audio-visual presentations, stories from the Mahabharata are brought to life, allowing visitors to engage with ancient epics in an immersive and memorable way.



KUPPAM TOURIST ITINERARY (EAST & WEST)

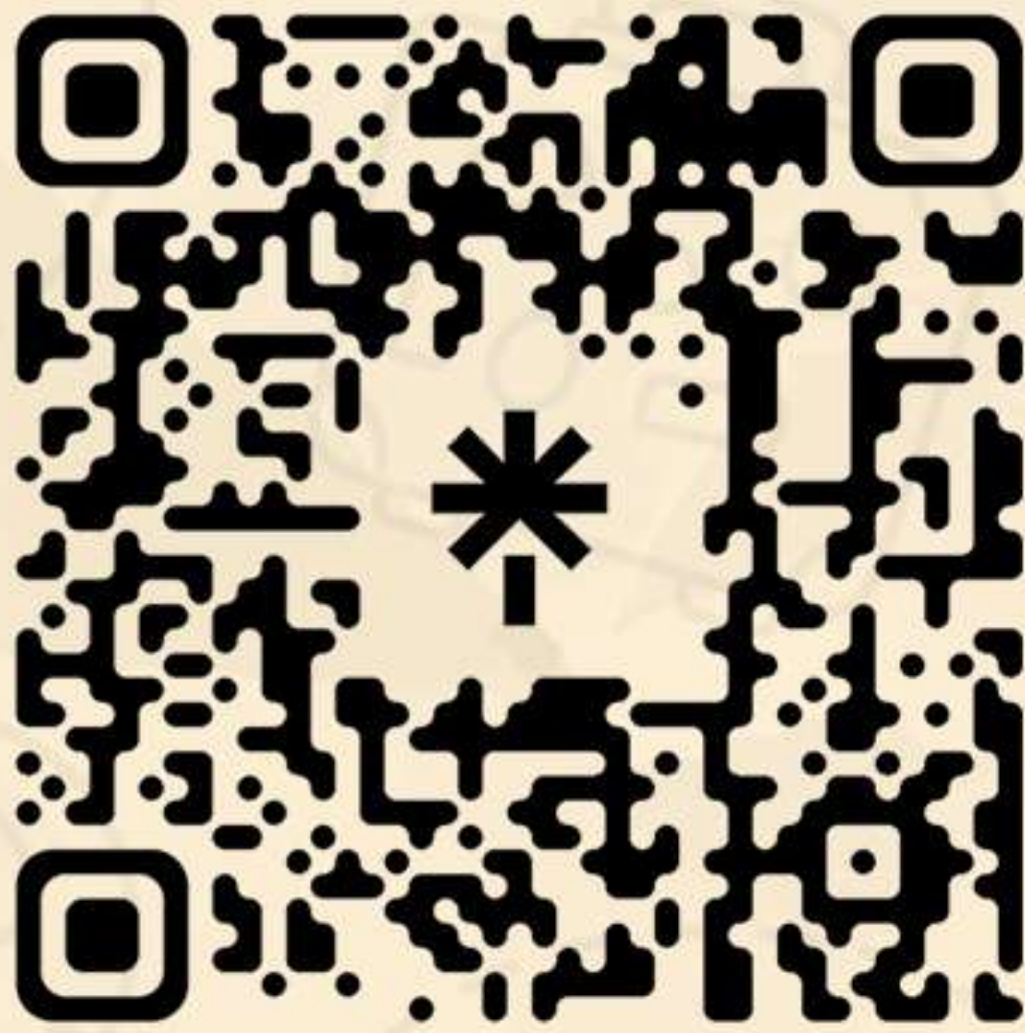
Circuit	Key Places
Kuppam East (1 Day)	Punnami → Kanaka Nashamma Temple → Dibbarevulu → Chelimichenu Waterfalls → Kangundi Fort → Naniyala Elephant Camp → Ramakuppam Temples → Punnami
Kuppam West (1 Day)	Nadumuru Nagaravanam → Betarayaswamy Temple → Mallappakonda → Gudivanka Temple Agastya Innovation Hub → Dravidian University → Yamaganipalle Temple → Kuppam

Homestays in Kangundi :

Experience local hospitality by staying at charming homestays in Kangundi, offering comfortable rooms and a taste of village life close to nature and adventure.

Tourists can choose a 1-day tour of Kuppam East or West, or a 2-day tour covering both.

Scan this QR code to access official tourism resources, event calendars, brochures, and more all in one place



Scan this QR code



ANDHRA PRADESH
TOURISM

Andhra Pradesh Tourism Authority
5th Floor, Stalin Corporate Office,
Auto Nagar, Industrial Area, Vijayawada.

